

ERIK BREDE PHOTOGRAPHY
Erik Bredé

{ YOU DON'T TAKE A PHOTOGRAPH,
YOU MAKE IT. }

ANSEL ADAMS

“ FROM LANDSCAPE TO SURREALISM ”



ABOUT

SURREAL AND FINE ART WORK FROM THE NORWEGIAN PHOTOGRAPHER AND DIGITAL ARTIST ERIK BREDE.

Erik Brede is a photographer and Photoshop artist, born in 1971 in Svolvær, Lofoten Islands, Norway. His photography journey started at the age of 11 when his father introduced him to the great magic of film development and post-production in his low budget darkroom. Even if the old analog darkroom is replaced by Photoshop and Lightroom, his vision and creative ideas are the same.

With a conceptual approach, Brede tries to approach a wide scale of subjects in a multi-layered way to produce a link between the landscape's reality and that imagined by its conceiver. These works focus on concrete questions that determine our existence.

His work have been sold to television company, record industries and collectors all over the world, and published in books like 'The Best of Photography 2014', 'The Best of Photography 2015' and 'International Contemporary Artist vol. X'.



“ FROM ARCHITECTURE TO FANTASY ”



PRINT TYPES

BRUSHED ALUMINIUM

EXCLUSIVE DIRECT PRINT ON BRUSHED ALUMINIUM – PURE ELEGANCE WITH AN EXCLUSIVE BUTLERFINISH® LOOK.

The photo is printed directly onto a 3 mm thick, sturdy brushed aluminium Dibond with a BUTLERFINISH® look. Two thin aluminium sheets sandwich a black polyethylene core to ensure maximum stability and water resistance. The upper aluminium layer, on which your photo will be printed directly, has the characteristic BUTLERFINISH® appearance. Thanks to the brushed surface, the aluminium backing gives the artwork an extraordinary, metallic appearance. During production of the cover sheet, the surface is ground horizontally to produce a brushed effect. The result is eye-catching: The areas of the photograph that are white or very light are not printed, but instead take on the appearance of the brushed aluminium surface. This product stands out for aesthetic reasons, but the material is also extremely robust and durable. Whether inside or in covered outdoor areas, the artwork has the best protection against elements such as direct sunlight, extreme temperatures, and damp.

IDEAL FOR INDOOR AND OUTDOOR USE, THANKS TO UV PRINTING

The direct UV-print is colour-fast, light-resistant, and even damp-proof. The artwork on brushed aluminium Dibond is therefore not only suitable for indoor areas such as the bathroom or the kitchen, but also for covered outdoor areas protected from rain and direct sunlight.

The aluminium Dibond backing is extremely light, and the practical hanging system ensures it is easy to hang on the wall, even with large formats. Simply unpack the artwork, hang it up, and enjoy its floating, metallic effect on your wall.

WHITEWALL – THE PHOTOGRAPHER'S LAB

ALL PRINTS ARE PRODUCED BY WHITEWALL INC. WHITEWALL SETS THE BAR EXTREMELY HIGH, WHICH HAS BEEN CONFIRMED BY NUMEROUS INDEPENDENT REVIEWS IN REPUTABLE MAGAZINES. WHITEWALL IS THE EXCLUSIVE SUPPLIER OF LUMAS –THE LARGEST GALLERY FOR EDITIONS OF CONTEMPORARY PHOTO ART IN GERMANY AND EUROPA.

ARCHIVAL GICLEE PRINT

GICLEE IS THE PROCESS OF MAKING FINE ART PRINTS FROM A DIGITAL SOURCE USING INK-JET PRINTING TECHNOLOGY.

Erik Brede use only the highest quality acid-free Giclee papers, and genuine Epson pigment inks for the fineart paper prints. The Wilhelm Institute and Aardenburg Imaging ranked Epson Inks in the top three of all archival inks currently in production. The Giclée Print is made on the state of the art Epson Inkjet 11880 using 9 color K3 pigment inks at WhiteWall inc.

Hahnemühle Photo rag® 308 fineart paper is used for all the Giclée Prints. This is a heavy (308gsm), white, 100% cotton paper with a smooth surface texture that guarantees archival standards. With its premium matte inkjet coating Photo Rag meets the highest industry standards regarding density, color gamut, color graduation and image sharpness while preserving the special touch and feel of genuine art paper. The fine, smooth surface and feel of Photo Rag make this paper very versatile and it is ideal for printing both black and white and color photographs and art reproductions with impressive pictorial depth.



PUBLICITY

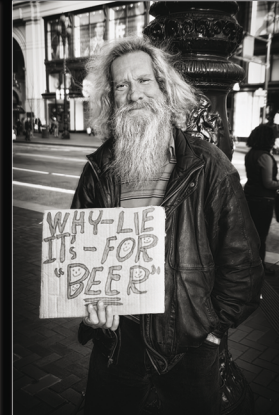
Erik Brede has over the years received international recognition through exhibitions in the United States, England and France. His images are sold to collectors at home and abroad, and published in international books as "Best of Photography 2014" "Best of Photography 2015" and "International Contemporary Artists Vol X".

His greatest merits must be said to be selling the image "House by the sea" to CBS for use in Stephen King's television series "Under the Dome", and participation in The Fifth Exposure Award Exhibition at Louvre, Paris. The selected pictures was included in the photobook "The Black and White Collection, Louvre" and in the book "The Best of Photography 2014".



When you photograph people in color, you photograph their clothes. But when you photograph people in Black and white, you photograph their souls!

- Ted Grant



INFRARED BW PHOTOGRAPHY



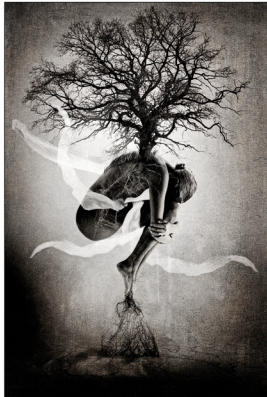
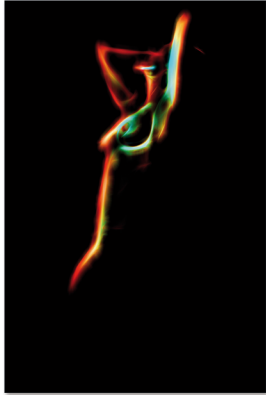
Most of the black and white images from Erik Brede Photography is infrared made using a full spectrum modified Canon and an IR720 filter. In infrared photography, the image sensor is sensitive to infrared light. The part of the spectrum used is referred to as near-infrared to distinguish it from far-infrared, which is the domain of thermal imaging. Wavelengths used for photography range from about 700 nm to about 900 nm. The sensor is modified to capture full spectrum so an infrared-passing filter is used, this lets infrared (IR) light pass through to the camera, but blocks all or most of the visible light spectrum.

Some of the effects obtained when using infrared-sensitive sensors is false-color or black and white images with a dreamlike or sometimes lurid appearance known as the "Wood Effect" an effect mainly caused by foliage strongly reflecting in the same way visible light is reflected from snow.

The other attributes of infrared photographs include very dark skies and penetration of atmospheric haze, caused by reduced Rayleigh scattering and Mie scattering, respectively, compared to visible light. The dark skies, in turn, result in less infrared light in shadows and dark reflections of those skies from water, and clouds will stand out strongly. These wavelengths also penetrate a few millimeters into skin and give a milky look to portraits, although eyes often look black.



ERIK BREDE
PHOTOGRAPHY



"I can look at a fine art photograph
and sometimes I can hear music."
- Ansel Adams

LIMITED EDITION PRINTS

All Prints from Erik Brede Photography are available as “Exclusive Limited Edition” Fine Art Prints. All my prints are “true editions” which means that it will only be produce that amount of original signed prints of that particular motif listed. No more than 10-30 + 3AP prints of each piece, (all sizes and material types combined) will ever be produced. This will give a higher value to your investment compared with prints that are available in much larger quantities.

CERTIFICATE OF AUTHENTICITY

A Certificate of Authenticity (CoA) is an official document that includes several details about the artwork.

Every Limited Edition Print purchased from Erik Brede Photography comes with a signed certificate of authenticity, certificate hologram tamper with CoA#, and a signed label which can be affixed to back of the artwork. The document is mailed to the customer as soon as the artwork is delivered and accepted. The print have to be marked with the Certificate of Authenticity & Hologram System to be regarded as genuine. The system is designed to protect the security and genuineness of your limited edition art works and reduce the risk of forgery.

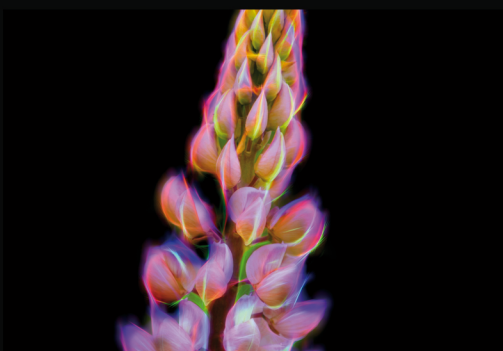
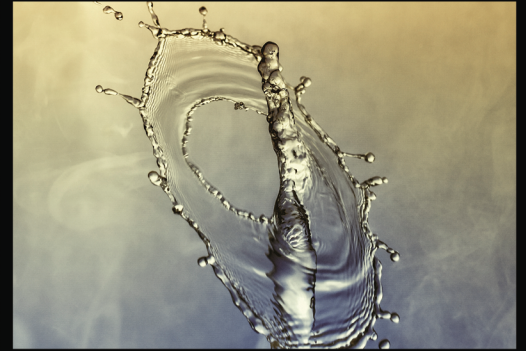
Each Certificate is equipped with a serialized numbered hologram. A second, identically numbered hologram is ready to be applied to the reverse side of the artwork after receiving the CoA letter. The combination of the certificate and hologram assures that each Certificate of Authenticity relates to one particular piece of art and makes this a Signed, Limited edition.

All certificates of authenticity from Erik Brede Photography are original hand-signed documents – NOT photocopies. A legitimate certificate of authenticity must fully and accurately describe the work of art which it is authenticating, including size, medium (limited edition print), date, title, edition size and CoA#. There should be no doubt that the CoA describes one and only one work of art. CoA from Erik Brede Photography meets all of these criteria.



ERIK BREDE
PHOTOGRAPHY





WHERE TO BUY LIMITED EDITION PRINTS

ALL PRINTS FROM ERIK BREDE PHOTOGRAPHY ARE AVAILABLE AS "EXCLUSIVE LIMITED EDITION" FINE ART PRINTS FROM THE FOLLOWING ART GALLERIES AND ART SITES

www.erikbrede.com - Erik Brede Photography - The Official Website

www.artfinder.com/brede - Artfinder - International art site located in London, UK

www.saatchiart.com/brede - SaatchiArt - International art site located in London, UK

www.fineartseen.com/artist/erik-brede-photography/ - FineartSeen - International art site located in Oxfordshire, UK

Coupn Code for first time use at www.erikbrede.com (20% off):

artwork20

ERIK BREDE PHOTOGRAPHY
Erik Brede

THERE ARE ALWAYS TWO PEOPLE IN
EVERY PICTURE: THE PHOTOGRAPHER
AND THE VIEWER.

ANSEL ADAMS



ERIK BREDE
PHOTOGRAPHY



ERIK BREDE
PHOTOGRAPHY

www.erikbrede.com | contact@erikbrede.com | +47-970-70-992